

The following installation instructions are a recommendation but are not intended as a definitive project specification. They are presented in an attempt to be used with recommended installation procedures as published by the National Oak Flooring Manufacturers Association, National Wood Flooring Association or your local wood flooring association.

SUBFLOOR

1. All subfloor work should be in accordance with the recommended procedures as published by the National Oak Flooring Manufacturers association and National Wood Flooring Association.
2. Concrete subfloor should be properly sloped, structurally sound, level and clean.
3. Inspect concrete subfloor for any open cracks and fill with a high grade epoxy filler.
4. Remove any excess concrete lumps or residue that may interfere with the installation of the AcoustiCORK underlayment

TESTING FOR MOISTURE

1. Test concrete slab for excessive moisture prior to installing AcoustiCORK underlayment.
2. If excessive moisture is present in the slab, consul the project architect for materials and methods o installation to correct the problems.

VAPOR BARRIER

1. Consult the most recent NOFMA and NWFA Installation Manuals for materials and methods associated with the use of vapor barrier.

PERIMETER ISOLATION BARRIER

1. Install the precut ¾" wide, 6mm thick perimeter isolation barrier vertically around the perimeter of the entire floor including any openings or protrusions such as electrical boxes, heating ducts, cold air returns, columns or pipes in the subfloor installation. The perimeter isolation barrier must be installed prior to AcoustiCORK underlayment being installed.
2. Remove the release liner from the self-adhesive backing and place flat against the wall flush to the floor.
3. After positioning, press the isolation barrier firmly into place at all wall or vertical partitions surrounding the perimeter areas using AcoustiCORK underlayments.
4. Never mechanically fasten the isolation barrier with screws, nails or staples as this will severely diminish the acoustical values of the entire sound rated floor system.
5. **After the floor is installed and grouted**, trim the isolation barrier ¼" below the finished floor surface.
6. Caulk the trimmed areas with a bead of non-hardening

acoustical sealant flush to the finished floor.

ACOUSTIC UNDERLAYMENTS

1. Cut 6mm AcoustiCORK underlayment to desired length and install directly over the subfloor with crown of the rolled material down (label side down). The temporary curl of the material will easily flatten out after the material has been glued and rolled.
2. Butt the cork directly against the isolation barrier already installed.
3. Joints should be butted together tightly and taped with duct or fiberglass mesh tape. It is not recommended that the AcoustiCORK be glued to the subfloor. Never mechanically fasten the cork to the floor as this will severely diminish the acoustical value of the cork.
4. After completion, cork should cover the entire flooring area without gaps and with joints securely taped.

PLYWOOD SUBFLOOR

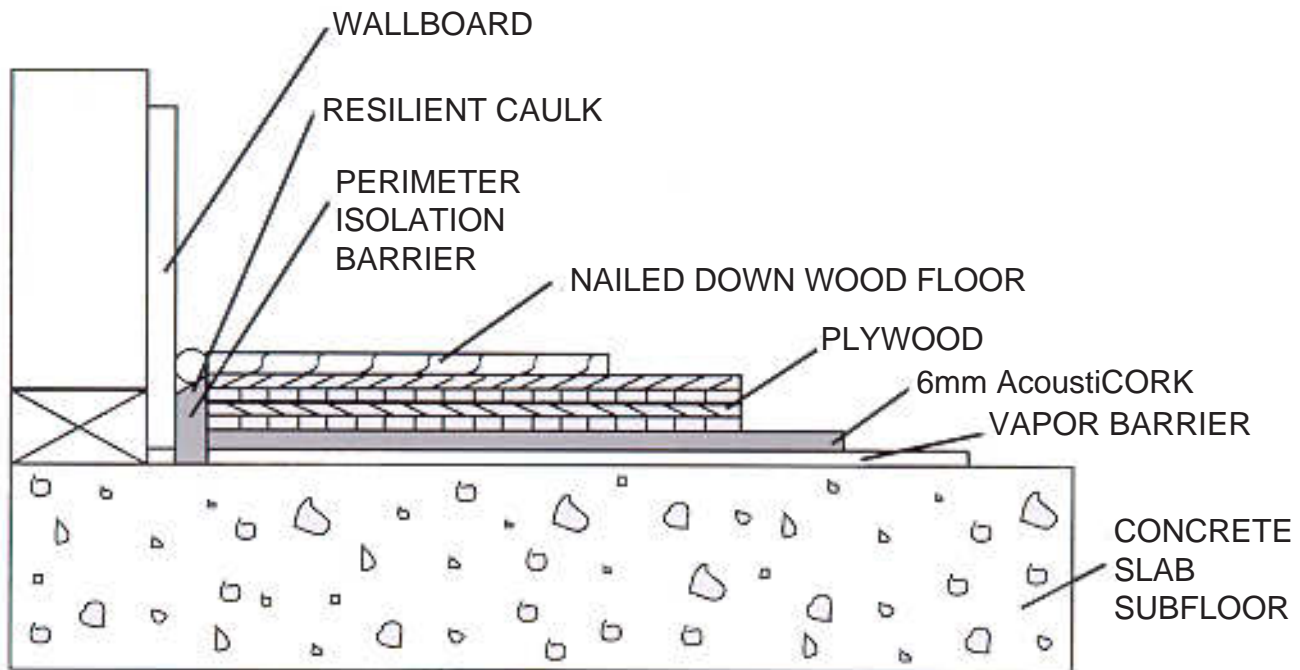
1. Consult the most recent NOFMA and NWFA Installation Manual for material and methods associated with the installation of a plywood subfloor to be used with a Nailed Down Wood Floor.

NAILED DOWN WOOD FLOORING

1. Follow manufacturers recommended instructions for finished floor, including any membrane as required by the manufacturer.
2. Never drive a mechanical fastening device through the plywood nailer and cork into the subfloor. This will severdy diminish the acoustical value of the cork.
3. If a baseboard is used, leave a minimum 1/8" gap between the finished floor and the bottom of the baseboard.

AcoustiCORK PRODUCTS

Sound Control Underlayment & Crack Suppression Membrane
26112 110th Street PO Box 25 Trevor, WI 53179
1-800-255-2675 FAX 1-262-862-2500



Nailed Down Wood Flooring on a Concrete Slab

NOTE: NOT DRAWN TO SCALE

AcoustiCORK PRODUCTS

Sound Control Underlayment & Crack Suppression Membrane
26112 110th Street PO Box 25 Trevor, WI 53179
1-800-255-2675 FAX 1-262-862-2500